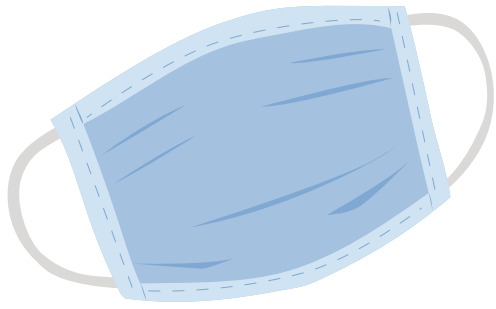




COVID-19 PREVENTION STRATEGIES FOR FAITH COMMUNITIES

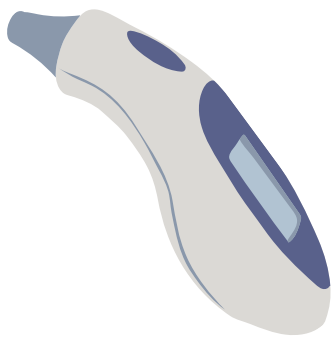


FACE MASKS

Returning to worship will require the wearing of masks for all three phases of Opening Up America. Request that members supply their own masks and have masks available for your community to help members who do not have access to a mask comply with regulations.

HAND SANITIZER

Access to soap and hand sanitizer will be crucial to preventing viral spread as worshippers reenter the building. Purchase or collect hand sanitizer for your community and strategize about location, accessibility, and administration of your hand sanitizing stations.

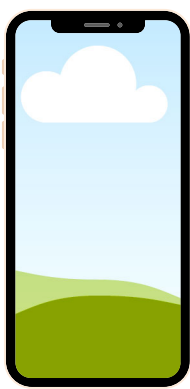


INFRARED FOREHEAD THERMOMETERS

In order to reduce transmission, members and visitors with a temperature of 100.4°F/38°C or higher should NOT attend worship. Purchase Infrared Forehead Thermometers that can be used as people enter worship.

SETTING UP YOUR SPACE

- Have a plan for maintaining 6 feet of physical distancing for entry, worship, and exiting with instructional signage.
- Remove Bibles, hymnals, offering envelopes, etc.
- Consider adding a screen or TV monitor into your worship space, do not use paper bulletins.
- Open all doors to eliminate transmission via doorknobs.
- Have a strategy in place for sanitizing before and after worship (i.e. pews, railings, doorknobs, microphones, etc).



ATTENDANCE & REPORTING

Create a process for reporting to your local health department and for notifying worship participants in case a member of your faith community contracts COVID-19. Consider opening a Google Voice phone number so participants can text you as a way to log attendance or have an allocated person collecting names as people arrive.

MANAGING MEMBER EXPECTATIONS

- In the weeks leading up to returning to your building, be sure to contact your members with specific guidelines of what to expect.
- Everyone, including pastors and worship leaders, will be wearing masks.
- Congregational song will not be a part of the in-person service.
- The offering plate will not be passed; consider other alternatives for giving.
- High-risk members (65+) are asked to continue worshipping virtually.
- There will be no fellowship hour before or after worship.
- Consider how you will welcome and communicate with visitors.

"PREPARE YOUR WORK OUTSIDE;
GET EVERYTHING READY FOR YOURSELF IN THE FIELD,
AND AFTER THAT BUILD YOUR HOUSE."
-PROVERBS 24:27

CREATED MAY 12, 2020

Created by Rev. E. Bradley Kibler, MPH
on behalf of

The COVID-19 Reopening to Reimagining Task Force of the Presbytery of Greater Atlanta